



# THE BLUEBIRD

Evansville Audubon Society Newsletter



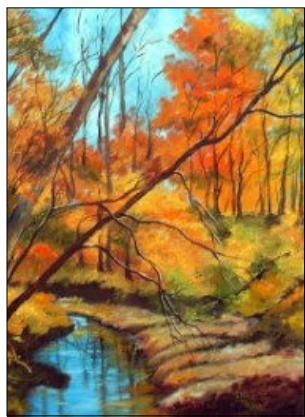
### INSIDE THIS ISSUE:

Page 2

Minutes  
Book Review  
Calendar of Events

Page 3

Conservation News  
Thoreau  
A Word from the Editor



A woodland in full color is awesome as a forest fire,

in magnitude at least,  
but a single tree is like  
a dancing tongue of  
flame to warm the  
heart.

Hal Borland

## ENDORSEMENT LETTER TO THE SENATE

From the National Audubon Society

Climate change poses an imminent danger to the survival of many species of birds and wildlife and the integrity of the ecosystems on which they depend. Recently over 100 of Audubon's state offices and local chapters endorsed a letter to the Senate requesting that they pass climate legislation that includes crucial funding to protect wildlife and natural resources from the ever-growing threat of climate change. Thanks to all for supporting this critical initiative!

While the letter is a great step in the right direction, it is essential that we continue to let our senators know that we strongly support climate legislation that provides for 5% of total revenues generated through the cap and trade program to go toward natural resources adaptation. A legislative approach to conquering climate change is not complete without provisions that help our wildlife survive a warming planet.

EAS was the only Indiana chapter to sign this letter! A copy of the letter with a list of signees can be found on our website at [www.evvaudubon.org](http://www.evvaudubon.org)

These funds would increase the coffers of the Land and Water Conservation Fund, the Neotropical Migratory Bird Conservation Act, the Endangered Species Act and other successful conservation programs. They would provide much needed resources to National Wildlife Refuge managers as they battle invasive species and other refuge threats that will only be exacerbated by climate change. Research, monitoring and education need to increase as well. A 5% dedication of funds to address the impacts of global warming will allow us to protect and expand crucial habitats and more thoroughly understand the effects that a climate change has on wildlife.

This fall, the Senate will take up global warming legislation. Now is the time to voice your support for increased adaptation funding. A quick call or email to your senators will help us build public demand for strong climate legislation and increased funding – 5% -- for wildlife.

To reach your senator please call the U.S. Capitol Switchboard at (202) 224-3121, or find your senator's contact information online at [www.senate.gov/general/contact\\_information/senators\\_cfm.cfm](http://www.senate.gov/general/contact_information/senators_cfm.cfm). (note: this can be found on our website [www.evvaudubon.org](http://www.evvaudubon.org))

If you prefer to send an email, you can do that at your senator's web site or through Audubon's Action Center, [www.audubonaction.org](http://www.audubonaction.org). Tell your senators that you want:

Strong climate legislation *this year* to reduce greenhouse gas emissions. Legislation that protects birds, wildlife, natural resources and ecosystems by dedicating 5% of revenues for wildlife adaptation.

Audubon has always spoken for birds, wildlife and their habitats, no matter the threat. Now is the time to speak out for strong climate legislation and the resources we need to protect the birds and wildlife we love.

# EAS Minutes

September 15, 2009

Following a great program by Chuck Mills on "Birding in Cuba", Dick Vernier brought the meeting to order. The minutes were approved as printed. There was no treasurer's report. The only expense was \$10 to the state attorney general for small business report.

The program for October 20 will be "Where Waters Wed: Southwestern Indiana" by Greg Meyer. Join us beforehand for dinner and camaraderie at 5:30pm at the Eastland Mall Food Court.

The November 17 program will be Wild Utah: America's Red Rock Wilderness given by Clayton Daughenbaugh.

The field trips are mostly on Saturday following the meeting. Sarah Karges is doing publicity and membership. The donation letter has been written and should be going out soon. Toyota and Audubon will be getting started working together on projects.

Regarding, the Ohio Valley Birding Festival, EAS has taken over the project and needs liability insurance. We are getting quotes on annual coverage for the festival and field trips. A refreshment sheet was passed around.



Bird sightings: Cane Ridge - sandpiper, Power Plant - 220 least terns, Rockport- 40 least terns. Jim Lodato spotted a Leucistic Red Tail off I164. Meeting was adjourned at 8:55pm. Joyce Padfield, Secretary



## A Book Review: *A Guide to the Birds of East Africa* by Nicolas Drayson

Although fiction, this book was recommended by members as an entertaining read. The following from amazon.com is a synopsis of the tale:

Ornithology cloaks this cozy tale of a lovelorn man. Mr. Malik of Nairobi pines for the leader of his bird-watching club, Rose Mbikwa. The widowed Rose also attracts plights of truth from the insincere Harry Kahn. When the two suitors discover each wants to ask Rose to the annual Hunt Club Ball, the rivals refer their conundrum to members of Mr. Malik's private club, who propose a contest: he who spots the most bird species in one week claims the right to ask Rose out. Their bird-watching methods reflect their personalities as the shy Mr. Malik walks or drives solitarily around Nairobi, while the bombastic Harry Kahn flies all around Kenya. En route, author Drayson (Confessing a Murder, 2002) often directly addresses his reader on the finer points of the birds tallied by the competitors. Complicating things with misadventure (bandits for Mr. Malik; a trespassing arrest for Harry Kahn), Drayson winds up his plot with an ending satisfactory to all parties. An entertainingly light romance for the avian set. --Gilbert Taylor, *Booklist*

(There are obvious comparisons to Alexander McCall Smith's "First Ladies Detective Agency" series, which are set in Bot-

**You can't be suspicious of a tree, or accuse a bird or a squirrel of subversion or challenge the ideology of a violet.**

Hal Borland

## BirdBreath



What about jaysitting?

## Calendar of Events

**Tuesday, October 20, 7:00 PM, Wesselman Woods Nature Preserve. "Where Waters Wed: Southwestern Indiana,"** by Greg Meyer. Join us beforehand for dinner and camaraderie at 5:30 PM at the Eastland Mall Food Court.

**Tuesday, November 17, 7:00 PM, Wesselman Woods Nature Preserve. "Wild Utah: America's Redrock Wilderness,"** will be presented by Clayton Daughenbaugh. Join us beforehand for dinner and camaraderie at 5:30 PM at the Eastland Mall Food Court.



**Tuesday, December 15, 6:00 PM, Wesselman Woods Nature Preserve, Christmas Sharing.** Each person bring a favorite covered dish, table service and drink. Following the meal, we will have a show-and-tell of some of your favorite nature memories. Please bring prints, slides or digital (CD.)

**Tuesday, January 19, 7:00 PM, Wesselman Woods Nature Preserve. "Update on On-Going Non-game Bird Projects",** by DNR avian biologist John Castrale. Join us beforehand for dinner and

## Scientists to Investigate Impacts of Wind Energy on Migratory Wildlife

### Industry and conservation representatives set research priorities

Racine, WI & Ithaca, NY, July 23, 2009—Thirty top wildlife scientists have announced agreement on some of the highest research priorities to help America's rapidly growing wind energy industry produce much-needed alternative energy—while also providing safe passage for birds and bats. This coalition of scientists from industry, government, nongovernmental organizations, and universities met recently in Racine, Wisconsin, to address unanswered questions about how continued wind energy development will affect migrating birds and bats. The meeting was hosted by the Cornell Lab of Ornithology, the American Bird Conservancy, and The Johnson Foundation at Wingspread.

"We see great potential in wind energy for addressing global climate change and reducing America's reliance on fossil fuels," said Dr. Michael Fry of the American Bird Conservancy. "It's critical we act now to understand the interactions between wind energy installations and birds and bats."

"Billions of birds migrate annually, taking advantage of the same wind currents that are most beneficial for producing wind energy," said Dr. Andrew Farnsworth of the Cornell Lab of Ornithology. "We know that in some locations a small percentage of wind turbines may cause the majority of bird and bat deaths. For example, Altamont Pass, east of Oakland, California, is an extreme case: in an area used regularly by migrant and resident raptors, only a fraction of the 5,000 turbines are responsible for most of the raptor deaths annually. As wind power develops further, we need to know more about how placement, design, and operation impact birds and bats as well as how habitat and weather conditions affect potential hazards."

The scientists addressed some of the critical information that could be collected using cutting-edge tools such as weather surveillance radar, thermal imaging, and microphones directed skyward to map migrations by day and night. New research will build upon monitoring and research studies of birds and bats before and after construction of existing wind energy facilities as well as work done by other researchers. The coalition appointed working groups to move this new research agenda forward. Top research priorities identified by the coalition include:

- ✦ Studying bird and bat behaviors, and more accurately estimating mortality at existing wind turbines
- ✦ Using current and newly-obtained information on bird and bat population numbers and distribution to focus research on critically important migratory routes and timing
- ✦ Documenting how interactions of birds and bats with turbines are affected by factors such as weather, topography, and their distribution within airspace swept by wind turbine blades
- ✦ Establish standardized methods for pre- and post-construction studies for assessing bird and bat behavior at wind facilities

Conduct research on best practices for mitigating the impacts of wind energy development on birds and bats

"Conducting this research will help the wind industry make informed, science-based decisions about where future wind energy projects can be built, and how they can be operated to minimize the impact on migrating wildlife, while still providing much-needed alternative energy," said Dr. John Fitzpatrick, director of the Cornell Lab of Ornithology. "It will also help flesh out specific guidelines for wind farm construction being developed by the U.S. Fish and Wildlife Service."

"Imagine if a similar effort had taken place at the turn of the 20th century with the auto industry and air quality," said Kraig Butrum, President and CEO of the American Wind Wildlife Institute, an umbrella organization for the wind energy industry and environmental groups. "We'd probably be in a completely different place when it comes to global climate change and energy dependence, because we considered environmental impact from the start."



INFORMATION FROM THE :

AMERICAN BIRD CONSERVANCY

CONSERVING WILD BIRDS AND THEIR HABITATS THROUGHOUT THE AMERICAS

An interesting excerpt from the book, "**The Thoreau You Don't Know**," by Robert Sullivan:

"While he was in Milwaukee, Thoreau, by coincidence, appears to have come very close to crossing paths with John Muir, a Wisconsin native who would later take to heart Thoreau's writings on the importance of land conservation. The relationship between Thoreau and Muir is nicely encapsulated by the poet Robert Haas, who adds the two men into a longer chain that combines poetry and politics: William Wordsworth is read by Henry Thoreau. Thoreau is read by John Muir. Muir is read by Teddy Roosevelt. Roosevelt writes the bills that make national parks: poetry in action."



### From the Editor

### eNewsletter vs Paper Copy:

We are now offering the online version of our newsletter at [www.evvaudubon.org](http://www.evvaudubon.org). The newsletter is viewed as a .pdf file and can be printed if desired.

The online version includes photographs and color graphics that we cannot use in the paper version (cost prohibitive!) If you want to help conserve our natural resources and save printing and postage costs, please contact Steve Heeger at [sdheeger@sbcglobal.net](mailto:sdheeger@sbcglobal.net) with your name, mailing address to be deleted and email address so we can notify you when the online version is available. It will be viewed on our website.

*Judith Russell*

Visit our Website at [www.evvaudubon.org](http://www.evvaudubon.org)  
Latest information regarding field trips,  
photos, recent bird counts, online version of  
the Newsletter, etc.

Contact the webmaster at:  
[therussells.golf@yahoo.com](mailto:therussells.golf@yahoo.com)



**Evansville Audubon Society**  
**Evansville, IN**  
**Permit No. 1666**  
**Wesselman Woods Nature Preserve**  
**551 North Boeke Road**  
**Evansville, IN 47711**

**Non Profit Org.**  
**US Postage**  
**Paid**  
**Evansville, IN**  
**Permit No. 1666**

President: Richard Vernier (812) 385-5058  
Newsletter Editor: Judi Russell, (812) 491-7256, therussells.golf@yahoo.com

Moving? Send change of address to:  
Steve Heeger  
15340 Cemetery Road  
Evansville, IN 47725

**The mission of the Evansville Audubon Society is to promote the awareness of and appreciation for birds and other wildlife and their habitats through education and conservation.**

Not an EVANSVILLE AUDUBON SOCIETY member? Join now and become a member of the National Audubon Society as well.

\$20: 1 year introductory rate  
 \$15: 1 year Student/ Senior (62 and over) rate  
 \$30: 2 year Special Rate

Mail to: Ted Hitch, EAS Treasurer, 8713 Camellia Drive, Evansville, IN 47711

Name \_\_\_\_\_

Address \_\_\_\_\_

City \_\_\_\_\_ State \_\_\_\_\_ ZIP \_\_\_\_\_

My check enclosed  
Checks payable to: National Audubon Society

**If this is for a gift, please include name and address of person giving gift:**

Name \_\_\_\_\_

Address \_\_\_\_\_

City \_\_\_\_\_ State \_\_\_\_\_ ZIP \_\_\_\_\_